



the **play inspection** company

Annual Inspection

Lichfield District Council

Elford Jubilee Memorial Playground

Off Church Road, Elford, Tamworth, Staffordshire, B79
9DA



API Associate



Unit 5, Glenmore Business Park, Blackhill Road, Poole, Dorset, BH16 6NL
t- 01202 590675 e- info@playinspections.co.uk

www.playinspections.co.uk

RPII Inspection Methodology

This document outlines the RPII position on inspections undertaken by the Inspectors listed on the RPII Register of Inspectors for Indoor Annual, Outdoor Annual, Outdoor Operational and Outdoor Routine.

Inspections are undertaken with reference to the standards listed in this preamble only; where no date for the standard is given it the date of the standard will be that current at the time of inspection with the exception of where overlap periods are granted by the standards committee when standards are updated. The information contained in reports is provided to assist the owner/operator in fulfilling their responsibilities as detailed in the relevant standard. Other standards referenced within the listed standards do not form part of the inspection.

The following standards are relevant to all installations of equipment that are publicly accessible to users; this would include public parks, pay and play parks, schools, nurseries, public houses, holiday parks, indoor play centres, farm parks etc. All equipment used or employed in publicly accessible areas should meet with the requirements of the relevant standards (listed below);

BS EN 1176 Parts 1, 2, 3, 4, 5, 6, 10 & 11 Playground equipment intended for permanent installation outdoors & indoors.

BS EN 1176 Part 7 - 'Guidance on Installation, Inspection, Maintenance and Operation' (this document gives guidance to the owners/operators of the facility on the installation, inspection, maintenance and operation of playground equipment, including ancillary items).

Domestic play equipment falls outside of the scope of BS EN 1176 and has its own standard (BS EN 71 – Safety of Toys). Where domestic equipment can be identified this will be acknowledged in the report but any comments concerning compliance within the inspection will still refer to BS EN 1176.

Other equipment that is not clearly identified as unsupervised or domestic (natural play, self-build equipment etc.) will be assessed for compliance with the relevant standard listed below:

BS EN 15312 - Free access multi-sports equipment

BS EN 14974 - Skateparks

BS EN 16630 - Permanently installed outdoor fitness equipment

BS EN 16899 - Parkour equipment (plus RPII/API guidance notes)

Annual and Post Installation inspections will take into consideration compliance with current standards and defects related to wear and vandalism. Items not listed in the report have not been included in the inspection. The inspection will cover the playground equipment and the active area up to 3.0 metres around, or the fence line if closer.

Operational inspections only take into consideration defects related to wear and vandalism. Routine visual inspections (if undertaken) relate only to the most obvious defects such as broken or missing parts, vandalism and issues created by severe weather conditions (the intention is to identify hazards created by storm damage).

The inspection is non-dismantling, non-destructive and does not include for any structural, toxicology or impact assessments defined in the standard; however, the inspector will undertake a manual test for stability and if equipment fails under manual load, or any other hazard is identified as an unacceptable risk, the owner/operator will be notified as soon as practicably possible.

The inspector will access all standing surfaces as necessary on the equipment and assess all parts up to 2.5m above the standing surface. Where it is not possible to access parts of the equipment without employing an alternative means of access the report will record the action required by the owner/operator to ensure the continued safe use of the equipment. Ancillary equipment will be assessed using the inspector's knowledge and experience of the standards named in this document to ensure as far as is reasonably practicable the continued safe use of the items concerned. The owner/operator is responsible for the overall safety of the equipment and area. Inspectors who are trained to use ladders may use them where it is safe to do so, but if members of the public are present on-site ladders may not be used to access the equipment.

The inspector will not undertake any of the following works unless specifically agreed in writing at the time of order:

Checking the depth and underlying structural integrity of any surface areas and/or carrying out any testing of impact absorbing properties of any surfaces. The identification of any corrosion, rot or other deterioration in any apparatus or equipment other than by an external inspection or the inspection of any equipment (or part thereof) that is underground. Tightening any bolts, hinges or other fixing devices on any apparatus or equipment. Assessing or inspecting any electrical installations contained on any site and/or apparatus and/or equipment. Assessing or inspecting any water supplies and/or water features and/or any associated computerised systems (including carrying out any programming).

Where planting or trees are mentioned in the report no aboricultural or horticultural assessments of toxicity, suitability or condition are undertaken; the owner/operator should have suitable inspections provided by a competent person.

The owner/operator should have a 'design risk assessment' provided by the manufacturer/designer of the area for the equipment and location in which the facility is installed.

The operator is responsible for managing risks of their provision and is required by law to carry out a 'suitable and sufficient assessment' of the risks associated with a site or activity and this inspection shall be considered as contributing to the operator's discharge of this responsibility.

The details contained within the report are a snapshot of the condition at the time of inspection only and subsequent events may affect the condition of the facility. Suggested remedial actions are based on the knowledge and experience of the inspector and/ or that of the inspection company. The owner/operator should seek the advice of the manufacturer or a competent person at all times when undertaking repairs and/or modifications to equipment.

A full copy of the Play Inspection Company Ltd. Terms & Conditions is available on our website (www.playinspections.co.uk)

Table 1

The operator is responsible for following the guidance of the relevant standards. The standards give guidance on the installation, inspection, maintenance and operation of the various types of facilities. The inspection guidance is listed in Table 1, with an indication of which parts will be included in an RPII Annual or Post-Installation Inspection. The relevant standards also contain additional parts which the operator should follow.

Inspection recommendations of relevant standards Refer to relevant standards for full text	Annual Main	RPII Annual Outdoor/ Fully enclosed Inspection
6.1 d) Overall levels of safety of equipment (see note 1)	✓	✓ [1]
6.1 d) Overall levels of safety of foundations (see note 1)	✓	✓ [1]
6.1 d) Overall levels of safety of playing surfaces (see note 2)	✓	✓ [2]
6.1 d) Compliance with the relevant parts of the standard and or risk assessment (see note 3)	✓	✓ [3]
6.1 d) Effects of weather	✓	✓
6.1 d) Presence of rot, decay or corrosion (see note 1)	✓	✓ [1]
6.1 d) Assessment of repairs made or added or replaced components (see note 4)	✓	✓ [4]
6.1 d) Excavation or dismantling/additional measures	✓	✗
6.2.1 Assessment of glass reinforced plastics (see note 5)	✓	✓ [5]
6.2.1 Inspection of one post equipment (see note 1)	✓	✓ [1]
6.2.4 Undertaking the Operators inspection protocol	✓	✗

NB: The clause numbers in table 1 are taken from BS EN 1176 - Part 7:2020. The content is equally applicable to all other relevant standards listed herein. Playgrounds contain a range of equipment from different manufacturers and installed over a number of years; operators should implement any guidance provided by the manufacturer. Item specific detail is not readily available to RPII Playground Inspectors, whose report contributes to the operator's overall Annual Main Inspection as detailed in the relevant standards.

[1] A manual test only is undertaken for stability. Wear and instability are only detectable where readily apparent without dismantling or destruction and without the use of tools, excavation or specialist equipment. Rot and corrosion are tested or with a hammer and/or steel rod. Decay in timber may exist which can only be found with specialist equipment.


[2] Only the visible condition and dimensional compliance of surface extent is considered. Neither testing of impact attenuating properties nor measurement of the thickness of bound surfaces are undertaken on RPII annual inspections.

[3] The inspection assesses compliance where this can be tested on site using manual methods without dismantling, destruction and without the use of tools or specialist equipment.

[4] The operator should use manufacturer's recommended parts, or equivalent. We are unable to verify if such parts have been used, and any subsequent change in quality or performance

[5] Visible glass fibres will be noted in reports. The operator is responsible for repairs or replacement.

Risk Assessment Matrix

			Scores in the report are multiplication factors of Likelihood x Severity					
			Severity>>					
Likelihood	Very High probability, if the situation is not addressed an accident is almost certain.	5	Very High	VL (5)	L (10)	M (15)	H (20)	VH (25)
	High probability an accident is probable without any added factor.	4	High	VL (4)	L (8)	M (12)	H (16)	H (20)
	Moderate probability an incident is foreseeable.	3	Moderate	VL (3)	L (6)	L (9)	M (12)	M (15)
	Some probability, requires a combination of factors to take place.	2	Low	VL (2)	VL (4)	L (6)	L (8)	L (10)
	No significant probability; lightning strike, freak accident.	1	Very Low	VL (1)	VL (2)	VL (3)	VL (4)	VL (5)
			Very Low	Low	Moderate	High	Very High	
			1	2	3	4	5	
			No injury likely e.g. damaged or soiled clothing, minor bruising, grazes	Minor injury, laceration or bruising requiring first aid only	Injury requiring medical intervention e.g. cuts requiring stitches	Serious injury including concussions or fracture of long bones	Severe injury involving a potential life changing injury or fatality	
			Severity>>					
<p>Note 1: The total risk scores included within our reports are a multiplication factor of the calculated Likelihood and Severity of each finding. Both Likelihood and Severity are given a number between 1 - 5 as shown on the matrix above and these two numbers are then multiplied together to give the total risk score that is shown against defects on the report. Total risk scores can be divided in both directions, i.e. a total risk score of 12 could be a Likelihood (3) x Severity (4) or Likelihood (4) x Severity (3).</p> <p>Note 2: When we inspect we only see a snapshot of the current condition of the equipment. It is the operators responsibility to ensure that there is a continuing level of maintenance to keep the equipment in good working order and the site fit for use.</p>								

Equipment has been assessed to the following standards where relevant:

- BS EN 1176 Parts 1-11 (Playground equipment and surfacing)
- BS EN 14974 (Facilities for users of roller sports equipment)
- BS EN 15312 (Free access multi-sports equipment)
- BS EN 16899 (Parkour Equipment)
- BS EN 16630 (Outdoor Fitness Equipment).



Elford Jubilee Memorial Playground

Inspection Ref: 1460064

Site Ref: 63926

Inspected: 10-September-2021 - 14:39 by Jamie Leeson

Risk Assessment: 12 Moderate Risk



Location:

The site is partially overlooked by properties in the local community

Disabled Access:

Some accessible features; an area that presents difficulties to the majority of people with disabilities but in favourable circumstances and certainly in partnership can be accessed.



i 8 - Low Risk

Item: Site General
Manufacturer: Owner/Operator
Surface Type: N/A
Item Quantity: 1
Equipment Compliance: N/A
Surface Area Compliance: N/A

Total Findings: 4



Finding 1

The site is accessible to the public during the COVID 19 pandemic. The government have released guidelines for safely re-opening these types of facilities which is available on the government website. - Ensure there is an appropriate risk assessment in place and review regularly

Finding 2

It is recommended that signage, with information including the site address, contact information for maintenance issues and emergency contact details are provided for the facility - Provide in accordance with the recommendations

Finding 3

There is moderate damage to the surface - Repair the damaged areas of surfacing

Finding 4

The surface is lifting at the edges and creating trip points - Repair perimeter of surfacing to remove trip points

i 8 - Low Risk

Item: Litter Bin
Manufacturer: Owner/Operator
Surface Type: Bitmac
Item Quantity: 1
Equipment Compliance: N/A
Surface Area Compliance: N/A

Total Findings: 1



Finding 1

The bin is not securely fixed to the surface and there is some possibility of the item tipping or rolling over - Secure the bin to the ground



i 8 - Low Risk

Item: Gate
Manufacturer: Owner/Operator
Surface Type: Bitmac
Item Quantity: 1
Equipment Compliance: N/A
Surface Area Compliance: N/A



Total Findings: 2

Finding 1

The rubber buffer is missing from the latch plate - Replace rubber buffer

Finding 2

There are openings that are less than 12mm that could trap or crush fingers - Where possible a 12mm gap should be maintained on both sides or between the gate leaves

i 4 - Very Low Risk

Item: Fence - Bow Top
Manufacturer: Owner/Operator
Surface Type: Bitmac
Item Quantity: 1
Equipment Compliance: N/A
Surface Area Compliance: N/A



Total Findings: 1

Finding 1

This item is satisfactory - no work required -



i 8 - Low Risk

Item: Bench
Manufacturer: Owner/Operator
Surface Type: Paving Slabs
Item Quantity: 1
Equipment Compliance: N/A
Surface Area Compliance: N/A



Total Findings: 1

Finding 1

There are trip hazards at the edges of the surface - Reinststate surrounding surface levels to remove the trip points

i 6 - Low Risk

Item: Spring Lion
Manufacturer: Hags
Surface Type: Wet Pour
Item Quantity: 1
Equipment Compliance: Yes
Surface Area Compliance: Yes



Total Findings: 2

Finding 1

The spring clamps are loose - Tighten all loose fixings

Finding 2

There are gaps opening between the surfacing and the edging surround or between the joints in the surfacing - Monitor for any further deterioration and repair as required



! 12 - Moderate Risk

Item: Basket Swing - Type 1
Manufacturer: Not Identified
Surface Type: Wet Pour
Item Quantity: 1
Equipment Compliance: No
Surface Area Compliance: No



Total Findings: 6

Finding 1

The surfacing is severely damaged exposing the concrete underneath - Repair damaged areas of surfacing

Finding 2

BS EN 1176 requires an additional 0.5m of unobstructed space at each end of the swing surfacing area. This is a relatively low risk finding and no remedial action is recommended at this point. - Monitor - No remedial work recommended

Finding 3

There is/are several inserts missing - Replace missing inserts

Finding 4

A number of fixing(s) have worked loose - Secure all loose fixings

Finding 5

The orientation of the swing joints are not in the direction of travel and this can lead to excessive wear - reinstall the joints in line with manufacturer's recommendations

Finding 6

The bushes are showing signs of wear - Monitor for any further deterioration and replace as required

i 6 - Low Risk

Item: Spring Horse
Manufacturer: Hags
Surface Type: Wet Pour
Item Quantity: 1
Equipment Compliance: Yes
Surface Area Compliance: Yes



Total Findings: 2

Finding 1

There are gaps opening between the surfacing and the edging surround or between the joints in the surfacing - Monitor for any further deterioration and repair as required

Finding 2

The spring clamps are loose - Tighten all loose fixings



i 6 - Low Risk

Item: Multi Play (Junior)
Manufacturer: Hags
Surface Type: Wet Pour
Item Quantity: 1
Equipment Compliance: No
Surface Area Compliance: Yes



Total Findings: 6

Finding 1

There are a number of dents in the slide surface - Monitor for any further deterioration and repair as required

Finding 3

There is some wear to the shackles - Monitor for any further deterioration and replace when 40% worn

Finding 5

The item has missing component(s) - Consider replacing missing components

Finding 2

There is/are bolt cap covers missing or damaged on the item - Replace missing or damaged bolt cap covers

Finding 4

There is/are finger entrapment/s in the redundant lugs and the item fails to meet the requirements of BS EN 1176 Part 1 4.2.7.6 Entrapment of fingers - Replace component or remove lugs

Finding 6

There is/are finger entrapment/s in the platform and the item fails to meet the requirements of BS EN 1176 Part 1 4.2.7.6 Entrapment of fingers - Monitor - No remedial work recommended



 12 - Moderate Risk

Item: 1 Bay Mixed Seat, 1 Cradle, 1 Flat
Manufacturer: Not Identified
Surface Type: Wet Pour
Item Quantity: 1
Equipment Compliance: Yes
Surface Area Compliance: Yes

Total Findings: 9



Finding 1

The surface is lifting at the edges and creating trip points - Repair perimeter of surfacing to remove trip points

Finding 3

There is/are bolt cap covers missing or damaged on the item - Replace missing or damaged bolt cap covers

Finding 5

There is some wear to the shackles. - Monitor for any further deterioration and replace when 40% worn

Finding 7

There is some wear to the lugs - Monitor for any further deterioration and replace when 40% worn

Finding 9

There is some evidence of rot in the timber - Monitor for any further deterioration and replace as required

Finding 2

There are areas or parts of the timber on the structure that have rotted - Replace all affected timbers

Finding 4

There are gaps opening between the surfacing and the edging surround or between the joints in the surfacing - Monitor for any further deterioration and repair as required

Finding 6

The swing seat connectors are loose - Tighten to secure

Finding 8

There is some notable evidence of chain wear - Monitor for any further deterioration and replace when 40% worn



i 9 - Low Risk

Item: Boat
Manufacturer: Not Identified
Surface Type: Wet Pour
Item Quantity: 1
Equipment Compliance: No
Surface Area Compliance: Yes



Total Findings: 7

Finding 1

Parts of the timber are rough or splintered - Remove all rough or sharp edges

Finding 3

The item is slightly loose in its foundations - Monitor for any further deterioration and repair as required

Finding 5

The shelter forms a hard object within the impact area of the equipment in contravention of the requirements of BS EN 1176 Part 1 - Monitor - No remedial work recommended

Finding 7

This item of equipment relies on a single post, or a line of posts, for stability and extra care needs to be taken with equipment of this nature to avoid the potential for catastrophic failure - Ensure that regular detailed inspections are undertaken to assess for rot, corrosion and general stability

Finding 2

There is some evidence of rot in the timber - Monitor for any further deterioration and replace as required

Finding 4

A number of fixing(s) have worked loose - Secure all loose fixings

Finding 6

There are projecting screw ends present - Remove and provide more appropriate fixings if required



i 10 - Low Risk

Item: Sand Play Unit
Manufacturer: Not Identified
Surface Type: Wet Pour
Item Quantity: 1
Equipment Compliance: No
Surface Area Compliance: No

Total Findings: 6



Finding 1

This item of equipment was not assessed during this inspection as the item was locked - Arrange inspection of the item when it is available

Finding 3

The boat forms a hard object within the impact area of the equipment in contravention of the requirements of BS EN 1176 Part 1 - Monitor - No remedial work recommended

Finding 5

A number of fixing(s) have worked loose - Secure all loose fixings

Finding 2

The fence forms a hard object within the impact area of the equipment in contravention of the requirements of BS EN 1176 Part 1 - Monitor - No remedial work recommended

Finding 4

There are areas or parts of the timber on the structure that have rotted - Replace all affected timbers

Finding 6

There are areas or parts of the timber roof on the structure that have rotted - Replace all affected timbers



! 12 - Moderate Risk

Item: Train
Manufacturer: Not Identified
Surface Type: Wet Pour
Item Quantity: 1
Equipment Compliance: No
Surface Area Compliance: No



Total Findings: 6

Finding 1

The sleepers form a hard object within the impact area of the equipment in contravention of the requirements of BS EN 1176 Part 1 - Monitor - No remedial work recommended

Finding 2

The design of the barriers encourages standing or sitting and fails the requirements of BS EN 1176 - Monitor - No remedial work recommended

Finding 3

A number of fixing(s) have worked loose - Secure all loose fixings

Finding 4

The item has missing component(s) - Consider replacing missing components

Finding 5

There are areas or parts of the timber on the structure that have rotted - Replace all affected timbers

Finding 6

The item has exposed edges and corners with a radius of less than 3mm and fails the requirements of BS EN 1176 - Provide a 3mm radius to all exposed edges and corners

i 8 - Low Risk

Item: Spring Whale
Manufacturer: Fahr Industries
Surface Type: Wet Pour
Item Quantity: 1
Equipment Compliance: Yes
Surface Area Compliance: Yes



Total Findings: 3

Finding 1

The Handgrips/Footrests rotate and may cause an unexpected movement for the user - Secure Handgrips/Footrests to prevent rotation.

Finding 2

The paintwork on the spring has been damaged or worn exposing the metal underneath which is rusting - Treat any rusting components and repaint

Finding 3

There is algae or moss growth on the surface resulting in slippery conditions - Clean and treat appropriately



i 8 - Low Risk

Item: Spring Toucan
Manufacturer: Fahr Industries
Surface Type: Wet Pour
Item Quantity: 1
Equipment Compliance: No
Surface Area Compliance: Yes



Total Findings: 3

Finding 1

There are gaps opening between the surfacing and the edging surround or between the joints in the surfacing - Monitor for any further deterioration and repair as required

Finding 2

There is algae or moss growth on the surface resulting in slippery conditions - Clean and treat appropriately

Finding 3

The end of handgrips and/or footrests have a cross section of less than 15cm² and fail to meet the requirements of BS EN 1176 Part 6 - Monitor - No remedial work recommended

! 12 - Moderate Risk

Item: Story Telling Chair
Manufacturer: Owner/Operator
Surface Type: Compacted Stone
Item Quantity: 1
Equipment Compliance: N/A
Surface Area Compliance: N/A



Total Findings: 4

Finding 1

There are trip hazards at the edges of the surface - Reinstate surrounding surface levels to remove the trip points

Finding 2

Parts of the timber are rough or splintered - Remove all rough or sharp edges

Finding 3

The item is loose in its foundations - Reinstall item to secure

Finding 4

There are areas or parts of the timber on the structure that have rotted - Replace all affected timbers



i 8 - Low Risk

Item: Table Tennis
Manufacturer: Cornilleau
Surface Type: Paving Slabs
Item Quantity: 1
Equipment Compliance: N/A
Surface Area Compliance: N/A



Total Findings: 1

Finding 1

The slab is lifting at the edges and creating trip points - Repair surfacing to remove trip points

i 8 - Low Risk

Item: Picnic Table
Manufacturer: Owner/Operator
Surface Type: Paving Slabs
Item Quantity: 3
Equipment Compliance: N/A
Surface Area Compliance: N/A



Total Findings: 1

Finding 1

The bench is not securely fixed to the surface and there is some possibility of the item tipping or rolling over - Secure the bench to the ground



 12 - Moderate Risk

Item: Multi Play (Toddler)
Manufacturer: Not Identified
Surface Type: Wet Pour
Item Quantity: 1
Equipment Compliance: No
Surface Area Compliance: Yes

Total Findings: 11



Finding 1

There is algae or moss growth on the surface resulting in slippery conditions - Clean and treat appropriately

Finding 3

There are gaps opening between the surfacing and the edging surround or between the joints in the surfacing - Monitor for any further deterioration and repair as required

Finding 5

The design of the barriers encourages standing or sitting and fails the requirements of BS EN 1176 - Monitor - No remedial work recommended

Finding 7

There is some graffiti present - Remove the graffiti

Finding 9

The plywood has delaminated in some places - Remove all rough or splintered edges.

Finding 11

There is / are toggle entrapment/s present in contravention of the recommendations set out in BS EN 1176 Part 3 - Monitor - no remedial work recommended

Finding 2

There is or are fixings missing on the item - Replace all missing fixings

Finding 4

The surface has subsided in some areas - Monitor for any further deterioration and repair as required

Finding 6

There are areas or parts of the timber on the structure that have rotted - Replace all affected timbers

Finding 8

The fireman's pole is less than 350mm from the platform and fails to meet the recommendations of BS EN 1176 Part 1 - Monitor - no remedial action recommended

Finding 10

There are areas or parts of the timber roof on the structure that have rotted - Replace all affected timbers



4 - Very Low Risk

Item: Sign
Manufacturer: Owner/Operator
Surface Type: Grass
Item Quantity: 1
Equipment Compliance: N/A
Surface Area Compliance: N/A

Total Findings: 1



Finding 1

Signage should be provided for the outdoor fitness equipment in accordance with the requirements of BS EN 16630, key requirements of the sign include, but are not limited to, intended users, medical safety and emergency contact details - Provide appropriate signage

8 - Low Risk

Item: Rower
Manufacturer: Sunshine Gym
Surface Type: Grass Matrix Tiles
Item Quantity: 1
Equipment Compliance: No
Surface Area Compliance: Yes

Total Findings: 2



Finding 1

There is no clear instruction label provided; an instruction label should be provided with each item of equipment in accordance with the requirements of BS EN 16630 - Provide appropriate instruction label/s

Finding 2

BS EN 16630 - 4.3.1 states that fitness equipment shall be designed so when at rest, the equipment shall automatically adjust so that the equipment is ready for the next user - Service the item



i 4 - Very Low Risk

Item: Leg Press
Manufacturer: Sunshine Gym
Surface Type: Grass Matrix Tiles
Item Quantity: 1
Equipment Compliance: Yes
Surface Area Compliance: Yes



Total Findings: 1

Finding 1

This item is satisfactory - no work required -

i 4 - Very Low Risk

Item: Arm and Pedal Bike
Manufacturer: Sunshine Gym
Surface Type: Grass Matrix Tiles
Item Quantity: 1
Equipment Compliance: Yes
Surface Area Compliance: Yes



Total Findings: 1

Finding 1

This item is satisfactory - no work required -



i 8 - Low Risk

Item: Cross Trainer
Manufacturer: Sunshine Gym
Surface Type: Grass Matrix Tiles
Item Quantity: 1
Equipment Compliance: No
Surface Area Compliance: Yes



Total Findings: 2

Finding 1

There is no clear instruction label provided; an instruction label should be provided with each item of equipment in accordance with the requirements of BS EN 16630 - Provide appropriate instruction label/s

Finding 2

The distance between the underside of the item and the ground is less than the 110mm required by BS EN 16630 - Monitor - No remedial work recommended

i 9 - Low Risk

Item: Basketball Post
Manufacturer: Not Identified
Surface Type: Bitmac
Item Quantity: 1
Equipment Compliance: No
Surface Area Compliance: N/A



Total Findings: 4

Finding 1

There is some damage to the chain net - Replace or repair as required

Finding 2

The backboard is damaged - Monitor for any further deterioration and repair as required

Finding 3

A number of fixing(s) have worked loose - Secure all loose fixings

Finding 4

The item is slightly loose in its foundations - Monitor for any further deterioration and repair as required



Findings information

0 - Risk Assessment not Undertaken (Finding 1)

Item: Ancillary Items - Site General
Manufacturer: Owner/Operator

Risk Level: N - Risk Assessment not Undertaken
Surface: N/A



Finding: The site is accessible to the public during the COVID 19 pandemic. The government have released guidelines for safely re-opening these types of facilities which is available on the government website.

Action: Ensure there is an appropriate risk assessment in place and review regularly

5 - Very Low Risk (Finding 2)

Item: Ancillary Items - Site General
Manufacturer: Owner/Operator

Risk Level: V - Very Low Risk
Surface: N/A



Finding: It is recommended that signage, with information including the site address, contact information for maintenance issues and emergency contact details are provided for the facility

Action: Provide in accordance with the recommendations



i 8 - Low Risk (Finding 3)

Item: Ancillary Items - Site General
Manufacturer: Owner/Operator

Risk Level: L - Low Risk
Surface: N/A



Finding: There is moderate damage to the surface

Action: Repair the damaged areas of surfacing



i 8 - Low Risk (Finding 4)

Item: Ancillary Items - Site General
Manufacturer: Owner/Operator

Risk Level: L - Low Risk
Surface: N/A



Finding: The surface is lifting at the edges and creating trip points

Action: Repair perimeter of surfacing to remove trip points



i 8 - Low Risk (Finding 1)

Item: Ancillary Items - Litter Bin
Manufacturer: Owner/Operator

Risk Level: L - Low Risk
Surface: Bitmac



Finding: The bin is not securely fixed to the surface and there is some possibility of the item tipping or rolling over

Action: Secure the bin to the ground

i 6 - Low Risk (Finding 1)

Item: Gates - Gate
Manufacturer: Owner/Operator

Risk Level: L - Low Risk
Surface: Bitmac



Finding: The rubber buffer is missing from the latch plate

Action: Replace rubber buffer



i 8 - Low Risk (Finding 2)

Item: Gates - Gate
Manufacturer: Owner/Operator

Risk Level: L - Low Risk
Surface: Bitmac



Finding: There are openings that are less than 12mm that could trap or crush fingers

Action: Where possible a 12mm gap should be maintained on both sides or between the gate leaves

i 8 - Low Risk (Finding 1)

Item: Ancillary Items - Bench
Manufacturer: Owner/Operator

Risk Level: L - Low Risk
Surface: Paving Slabs



Finding: There are trip hazards at the edges of the surface

Action: Reinstate surrounding surface levels to remove the trip points

i 6 - Low Risk (Finding 1)

Item: Rocking Equipment - Spring Lion
Manufacturer: Hags

Risk Level: L - Low Risk
Surface: Wet Pour



Finding: The spring clamps are loose

Action: Tighten all loose fixings

i 6 - Low Risk (Finding 2)

Item: Rocking Equipment - Spring Lion
Manufacturer: Hags

Risk Level: L - Low Risk
Surface: Wet Pour



Finding: There are gaps opening between the surfacing and the edging surround or between the joints in the surfacing

Action: Monitor for any further deterioration and repair as required



 12 - Moderate Risk (Finding 1)

Item: Swings - Basket Swing - Type 1
Manufacturer: Not Identified

Risk Level: M - Moderate Risk
Surface: Wet Pour



Finding: The surfacing is severely damaged exposing the concrete underneath

Action: Repair damaged areas of surfacing



i 4 - Very Low Risk (Finding 2)

Item: Swings - Basket Swing - Type 1
Manufacturer: Not Identified

Risk Level: V - Very Low Risk
Surface: Wet Pour



Finding: BS EN 1176 requires an additional 0.5m of unobstructed space at each end of the swing surfacing area. This is a relatively low risk finding and no remedial action is recommended at this point.

Action: Monitor - No remedial work recommended

i 4 - Very Low Risk (Finding 3)

Item: Swings - Basket Swing - Type 1
Manufacturer: Not Identified

Risk Level: V - Very Low Risk
Surface: Wet Pour



Finding: There is/are several inserts missing

Action: Replace missing inserts



i 6 - Low Risk (Finding 4)

Item: Swings - Basket Swing - Type 1
Manufacturer: Not Identified

Risk Level: L - Low Risk
Surface: Wet Pour



Finding: A number of fixing(s) have worked loose

Action: Secure all loose fixings

i 8 - Low Risk (Finding 5)

Item: Swings - Basket Swing - Type 1
Manufacturer: Not Identified

Risk Level: L - Low Risk
Surface: Wet Pour



Finding: The orientation of the swing joints are not in the direction of travel and this can lead to excessive wear

Action: reinstall the joints in line with manufacturer's recommendations



i 4 - Very Low Risk (Finding 6)

Item: Swings - Basket Swing - Type 1
Manufacturer: Not Identified

Risk Level: V - Very Low Risk
Surface: Wet Pour



Finding: The bushes are showing signs of wear

Action: Monitor for any further deterioration and replace as required

i 6 - Low Risk (Finding 1)

Item: Rocking Equipment - Spring Horse
Manufacturer: Hags

Risk Level: L - Low Risk
Surface: Wet Pour



Finding: There are gaps opening between the surfacing and the edging surround or between the joints in the surfacing

Action: Monitor for any further deterioration and repair as required

i 6 - Low Risk (Finding 2)

Item: Rocking Equipment - Spring Horse
Manufacturer: Hags

Risk Level: L - Low Risk
Surface: Wet Pour



Finding: The spring clamps are loose

Action: Tighten all loose fixings

i 4 - Very Low Risk (Finding 1)

Item: Activity Equipment - Multi Play (Junior)
Manufacturer: Hags

Risk Level: V - Very Low Risk
Surface: Wet Pour



Finding: There are a number of dents in the slide surface

Action: Monitor for any further deterioration and repair as required



i 4 - Very Low Risk (Finding 2)

Item: Activity Equipment - Multi Play (Junior)
Manufacturer: Hags

Risk Level: V - Very Low Risk
Surface: Wet Pour



Finding: There is/are bolt cap covers missing or damaged on the item

Action: Replace missing or damaged bolt cap covers



6 - Low Risk (Finding 3)

Item: Activity Equipment - Multi Play (Junior)
Manufacturer: Hags

Risk Level: L - Low Risk
Surface: Wet Pour



Finding: There is some wear to the shackles

Action: Monitor for any further deterioration and replace when 40% worn

5 - Very Low Risk (Finding 4)

Item: Activity Equipment - Multi Play (Junior)
Manufacturer: Hags

Risk Level: V - Very Low Risk
Surface: Wet Pour



Finding: There is/are finger entrapment/s in the redundant lugs and the item fails to meet the requirements of BS EN 1176 Part 1 4.2.7.6 Entrapment of fingers

Action: Replace component or remove lugs



i 6 - Low Risk (Finding 5)

Item: Activity Equipment - Multi Play (Junior)
Manufacturer: Hags

Risk Level: L - Low Risk
Surface: Wet Pour



Finding: The item has missing component(s)

Action: Consider replacing missing components

i 5 - Very Low Risk (Finding 6)

Item: Activity Equipment - Multi Play (Junior)
Manufacturer: Hags

Risk Level: V - Very Low Risk
Surface: Wet Pour



Finding: There is/are finger entrapment/s in the platform and the item fails to meet the requirements of BS EN 1176 Part 1 4.2.7.6 Entrapment of fingers

Action: Monitor - No remedial work recommended



i 8 - Low Risk (Finding 1)

Item: Swings - 1 Bay Mixed Seat, 1 Cradle, 1 Flat

Manufacturer: Not Identified

Risk Level: L - Low Risk

Surface: Wet Pour



Finding: The surface is lifting at the edges and creating trip points

Action: Repair perimeter of surfacing to remove trip points



 12 - Moderate Risk (Finding 2)

Item: Swings - 1 Bay Mixed Seat, 1 Cradle, 1 Flat
Manufacturer: Not Identified

Risk Level: M - Moderate Risk
Surface: Wet Pour



Finding: There are areas or parts of the timber on the structure that have rotted

Action: Replace all affected timbers



i 4 - Very Low Risk (Finding 3)

Item: Swings - 1 Bay Mixed Seat, 1 Cradle, 1 Flat

Manufacturer: Not Identified

Risk Level: V - Very Low Risk

Surface: Wet Pour



Finding: There is/are bolt cap covers missing or damaged on the item

Action: Replace missing or damaged bolt cap covers



i 6 - Low Risk (Finding 4)

Item: Swings - 1 Bay Mixed Seat, 1 Cradle, 1 Flat
Manufacturer: Not Identified

Risk Level: L - Low Risk
Surface: Wet Pour



Finding: There are gaps opening between the surfacing and the edging surround or between the joints in the surfacing
Action: Monitor for any further deterioration and repair as required

i 6 - Low Risk (Finding 5)

Item: Swings - 1 Bay Mixed Seat, 1 Cradle, 1 Flat
Manufacturer: Not Identified

Risk Level: L - Low Risk
Surface: Wet Pour



Finding: There is some wear to the shackles.
Action: Monitor for any further deterioration and replace when 40% worn



i 6 - Low Risk (Finding 6)

Item: Swings - 1 Bay Mixed Seat, 1 Cradle, 1 Flat

Manufacturer: Not Identified

Risk Level: L - Low Risk

Surface: Wet Pour



Finding: The swing seat connectors are loose

Action: Tighten to secure

i 6 - Low Risk (Finding 7)

Item: Swings - 1 Bay Mixed Seat, 1 Cradle, 1 Flat

Manufacturer: Not Identified

Risk Level: L - Low Risk

Surface: Wet Pour



Finding: There is some wear to the lugs

Action: Monitor for any further deterioration and replace when 40% worn



i 6 - Low Risk (Finding 8)

Item: Swings - 1 Bay Mixed Seat, 1 Cradle, 1 Flat
Manufacturer: Not Identified

Risk Level: L - Low Risk
Surface: Wet Pour



Finding: There is some notable evidence of chain wear

Action: Monitor for any further deterioration and replace when 40% worn

i 8 - Low Risk (Finding 9)

Item: Swings - 1 Bay Mixed Seat, 1 Cradle, 1 Flat
Manufacturer: Not Identified

Risk Level: L - Low Risk
Surface: Wet Pour



Finding: There is some evidence of rot in the timber

Action: Monitor for any further deterioration and replace as required



i 6 - Low Risk (Finding 1)

Item: Activity Equipment - Boat
Manufacturer: Not Identified

Risk Level: L - Low Risk
Surface: Wet Pour



Finding: Parts of the timber are rough or splintered

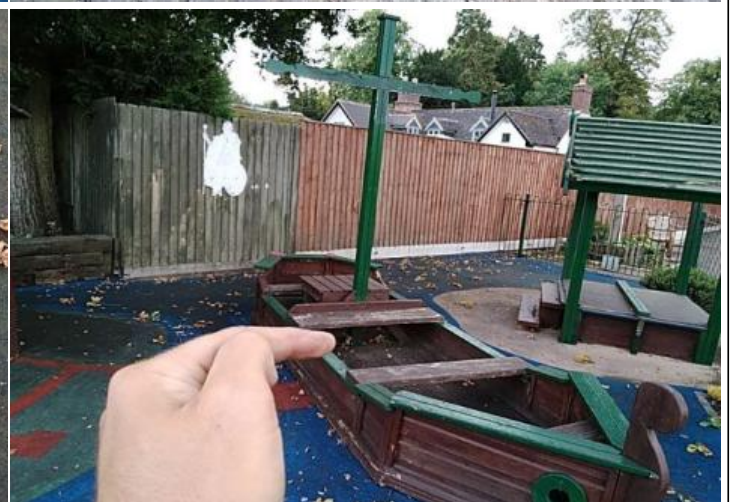
Action: Remove all rough or sharp edges



i 6 - Low Risk (Finding 2)

Item: Activity Equipment - Boat
Manufacturer: Not Identified

Risk Level: L - Low Risk
Surface: Wet Pour



Finding: There is some evidence of rot in the timber

Action: Monitor for any further deterioration and replace as required



i 6 - Low Risk (Finding 3)

Item: Activity Equipment - Boat
Manufacturer: Not Identified

Risk Level: L - Low Risk
Surface: Wet Pour



Finding: The item is slightly loose in its foundations

Action: Monitor for any further deterioration and repair as required

i 9 - Low Risk (Finding 4)

Item: Activity Equipment - Boat
Manufacturer: Not Identified

Risk Level: L - Low Risk
Surface: Wet Pour



Finding: A number of fixing(s) have worked loose

Action: Secure all loose fixings



i 5 - Very Low Risk (Finding 5)

Item: Activity Equipment - Boat
Manufacturer: Not Identified

Risk Level: V - Very Low Risk
Surface: Wet Pour



Finding: The shelter forms a hard object within the impact area of the equipment in contravention of the requirements of BS EN 1176 Part 1

Action: Monitor - No remedial work recommended

i 8 - Low Risk (Finding 6)

Item: Activity Equipment - Boat
Manufacturer: Not Identified

Risk Level: L - Low Risk
Surface: Wet Pour



Finding: There are projecting screw ends present

Action: Remove and provide more appropriate fixings if required



i 0 - Risk Assessment not Undertaken (Finding 7)

Item: Activity Equipment - Boat
Manufacturer: Not Identified

Risk Level: N - Risk Assessment not Undertaken
Surface: Wet Pour



Finding: This item of equipment relies on a single post, or a line of posts, for stability and extra care needs to be taken with equipment of this nature to avoid the potential for catastrophic failure
Action: Ensure that regular detailed inspections are undertaken to assess for rot, corrosion and general stability

i 0 - Risk Assessment not Undertaken (Finding 1)

Item: Activity Equipment - Sand Play Unit
Manufacturer: Not Identified

Risk Level: N - Risk Assessment not Undertaken
Surface: Wet Pour



Finding: This item of equipment was not assessed during this inspection as the item was locked
Action: Arrange inspection of the item when it is available



i 10 - Low Risk (Finding 2)

Item: Activity Equipment - Sand Play Unit
Manufacturer: Not Identified

Risk Level: L - Low Risk
Surface: Wet Pour



Finding: The fence forms a hard object within the impact area of the equipment in contravention of the requirements of BS EN 1176 Part 1

Action: Monitor - No remedial work recommended

i 5 - Very Low Risk (Finding 3)

Item: Activity Equipment - Sand Play Unit
Manufacturer: Not Identified

Risk Level: V - Very Low Risk
Surface: Wet Pour



Finding: The boat forms a hard object within the impact area of the equipment in contravention of the requirements of BS EN 1176 Part 1

Action: Monitor - No remedial work recommended



i 8 - Low Risk (Finding 4)

Item: Activity Equipment - Sand Play Unit
Manufacturer: Not Identified

Risk Level: L - Low Risk
Surface: Wet Pour



Finding: There are areas or parts of the timber on the structure that have rotted

Action: Replace all affected timbers

i 6 - Low Risk (Finding 5)

Item: Activity Equipment - Sand Play Unit
Manufacturer: Not Identified

Risk Level: L - Low Risk
Surface: Wet Pour



Finding: A number of fixing(s) have worked loose

Action: Secure all loose fixings



i 10 - Low Risk (Finding 6)

Item: Activity Equipment - Sand Play Unit
Manufacturer: Not Identified

Risk Level: L - Low Risk
Surface: Wet Pour



Finding: There are areas or parts of the timber roof on the structure that have rotted

Action: Replace all affected timbers

i 5 - Very Low Risk (Finding 1)

Item: Activity Equipment - Train
Manufacturer: Not Identified

Risk Level: V - Very Low Risk
Surface: Wet Pour



Finding: The sleepers form a hard object within the impact area of the equipment in contravention of the requirements of BS EN 1176 Part 1

Action: Monitor - No remedial work recommended



i 4 - Very Low Risk (Finding 2)

Item: Activity Equipment - Train
Manufacturer: Not Identified

Risk Level: V - Very Low Risk
Surface: Wet Pour



Finding: The design of the barriers encourages standing or sitting and fails the requirements of BS EN 1176
Action: Monitor - No remedial work recommended

i 6 - Low Risk (Finding 3)

Item: Activity Equipment - Train
Manufacturer: Not Identified

Risk Level: L - Low Risk
Surface: Wet Pour



Finding: A number of fixing(s) have worked loose
Action: Secure all loose fixings



i 6 - Low Risk (Finding 4)

Item: Activity Equipment - Train
Manufacturer: Not Identified

Risk Level: L - Low Risk
Surface: Wet Pour



Finding: The item has missing component(s)

Action: Consider replacing missing components



! 12 - Moderate Risk (Finding 5)

Item: Activity Equipment - Train
Manufacturer: Not Identified

Risk Level: M - Moderate Risk
Surface: Wet Pour



Finding: There are areas or parts of the timber on the structure that have rotted

Action: Replace all affected timbers



i 6 - Low Risk (Finding 6)

Item: Activity Equipment - Train
Manufacturer: Not Identified

Risk Level: L - Low Risk
Surface: Wet Pour



Finding: The item has exposed edges and corners with a radius of less than 3mm and fails the requirements of BS EN 1176
Action: Provide a 3mm radius to all exposed edges and corners

i 6 - Low Risk (Finding 1)

Item: Rocking Equipment - Spring Whale
Manufacturer: Fahr Industries

Risk Level: L - Low Risk
Surface: Wet Pour



Finding: The Handgrips/Footrests rotate and may cause an unexpected movement for the user
Action: Secure Handgrips/Footrests to prevent rotation.



i 6 - Low Risk (Finding 2)

Item: Rocking Equipment - Spring Whale
Manufacturer: Fahr Industries

Risk Level: L - Low Risk
Surface: Wet Pour



Finding: The paintwork on the spring has been damaged or worn exposing the metal underneath which is rusting
Action: Treat any rusting components and repaint

i 8 - Low Risk (Finding 3)

Item: Rocking Equipment - Spring Whale
Manufacturer: Fahr Industries

Risk Level: L - Low Risk
Surface: Wet Pour



Finding: There is algae or moss growth on the surface resulting in slippery conditions
Action: Clean and treat appropriately



i 6 - Low Risk (Finding 1)

Item: Rocking Equipment - Spring Toucan
Manufacturer: Fahr Industries

Risk Level: L - Low Risk
Surface: Wet Pour



Finding: There are gaps opening between the surfacing and the edging surround or between the joints in the surfacing
Action: Monitor for any further deterioration and repair as required

i 8 - Low Risk (Finding 2)

Item: Rocking Equipment - Spring Toucan
Manufacturer: Fahr Industries

Risk Level: L - Low Risk
Surface: Wet Pour



Finding: There is algae or moss growth on the surface resulting in slippery conditions
Action: Clean and treat appropriately



i 6 - Low Risk (Finding 3)

Item: Rocking Equipment - Spring Toucan
Manufacturer: Fahr Industries

Risk Level: L - Low Risk
Surface: Wet Pour



Finding: The end of handgrips and/or footrests have a cross section of less than 15cm² and fail to meet the requirements of BS EN 1176 Part 6
Action: Monitor - No remedial work recommended

i 8 - Low Risk (Finding 1)

Item: Other - Story Telling Chair
Manufacturer: Owner/Operator

Risk Level: L - Low Risk
Surface: Compacted Stone



Finding: There are trip hazards at the edges of the surface
Action: Reinstate surrounding surface levels to remove the trip points



i 6 - Low Risk (Finding 2)

Item: Other - Story Telling Chair
Manufacturer: Owner/Operator

Risk Level: L - Low Risk
Surface: Compacted Stone



Finding: Parts of the timber are rough or splintered

Action: Remove all rough or sharp edges

! 12 - Moderate Risk (Finding 3)

Item: Other - Story Telling Chair
Manufacturer: Owner/Operator

Risk Level: M - Moderate Risk
Surface: Compacted Stone



Finding: The item is loose in its foundations

Action: Reinstall item to secure



i 8 - Low Risk (Finding 4)

Item: Other - Story Telling Chair
Manufacturer: Owner/Operator

Risk Level: L - Low Risk
Surface: Compacted Stone



Finding: There are areas or parts of the timber on the structure that have rotted

Action: Replace all affected timbers



i 8 - Low Risk (Finding 1)

Item: Other - Table Tennis
Manufacturer: Cornilleau

Risk Level: L - Low Risk
Surface: Paving Slabs



Finding: The slab is lifting at the edges and creating trip points

Action: Repair surfacing to remove trip points

i 8 - Low Risk (Finding 1)

Item: Ancillary Items - Picnic Table
Manufacturer: Owner/Operator

Risk Level: L - Low Risk
Surface: Paving Slabs



Finding: The bench is not securely fixed to the surface and there is some possibility of the item tipping or rolling over

Action: Secure the bench to the ground



i 8 - Low Risk (Finding 1)

Item: Activity Equipment - Multi Play (Toddler)
Manufacturer: Not Identified

Risk Level: L - Low Risk
Surface: Wet Pour



Finding: There is algae or moss growth on the surface resulting in slippery conditions

Action: Clean and treat appropriately



i 8 - Low Risk (Finding 2)

Item: Activity Equipment - Multi Play (Toddler)
Manufacturer: Not Identified

Risk Level: L - Low Risk
Surface: Wet Pour



Finding: There is or are fixings missing on the item

Action: Replace all missing fixings



i 6 - Low Risk (Finding 3)

Item: Activity Equipment - Multi Play (Toddler)
Manufacturer: Not Identified

Risk Level: L - Low Risk
Surface: Wet Pour

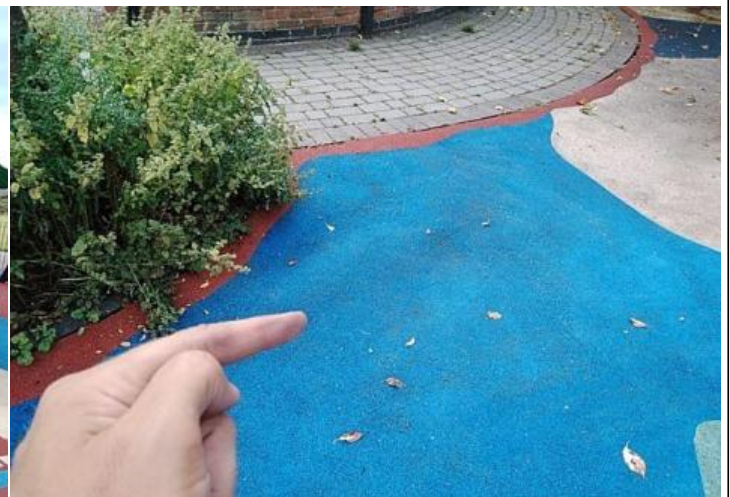


Finding: There are gaps opening between the surfacing and the edging surround or between the joints in the surfacing
Action: Monitor for any further deterioration and repair as required

i 6 - Low Risk (Finding 4)

Item: Activity Equipment - Multi Play (Toddler)
Manufacturer: Not Identified

Risk Level: L - Low Risk
Surface: Wet Pour



Finding: The surface has subsided in some areas
Action: Monitor for any further deterioration and repair as required



i 4 - Very Low Risk (Finding 5)

Item: Activity Equipment - Multi Play (Toddler)
Manufacturer: Not Identified

Risk Level: V - Very Low Risk
Surface: Wet Pour



Finding: The design of the barriers encourages standing or sitting and fails the requirements of BS EN 1176

Action: Monitor - No remedial work recommended



 12 - Moderate Risk (Finding 6)

Item: Activity Equipment - Multi Play (Toddler)
Manufacturer: Not Identified

Risk Level: M - Moderate Risk
Surface: Wet Pour



Finding: There are areas or parts of the timber on the structure that have rotted

Action: Replace all affected timbers



i 0 - Risk Assessment not Undertaken (Finding 7)

Item: Activity Equipment - Multi Play (Toddler)
Manufacturer: Not Identified

Risk Level: N - Risk Assessment not Undertaken
Surface: Wet Pour



Finding: There is some graffiti present

Action: Remove the graffiti

i 8 - Low Risk (Finding 8)

Item: Activity Equipment - Multi Play (Toddler)
Manufacturer: Not Identified

Risk Level: L - Low Risk
Surface: Wet Pour



Finding: The fireman's pole is less than 350mm from the platform and fails to meet the recommendations of BS EN 1176 Part 1

Action: Monitor - no remedial action recommended



i 6 - Low Risk (Finding 9)

Item: Activity Equipment - Multi Play (Toddler)
Manufacturer: Not Identified

Risk Level: L - Low Risk
Surface: Wet Pour



Finding: The plywood has delaminated in some places

Action: Remove all rough or splintered edges.



 10 - Low Risk (Finding 10)

Item: Activity Equipment - Multi Play (Toddler)
Manufacturer: Not Identified

Risk Level: L - Low Risk
Surface: Wet Pour



Finding: There are areas or parts of the timber roof on the structure that have rotted

Action: Replace all affected timbers

5 - Very Low Risk (Finding 11)

Item: Activity Equipment - Multi Play (Toddler)
Manufacturer: Not Identified

Risk Level: V - Very Low Risk
Surface: Wet Pour



Finding: There is / are toggle entrapment/s present in contravention of the recommendations set out in BS EN 1176 Part 3

Action: Monitor - no remedial work recommended

4 - Very Low Risk (Finding 1)

Item: Ancillary Items - Sign
Manufacturer: Owner/Operator

Risk Level: V - Very Low Risk
Surface: Grass



Finding: Signage should be provided for the outdoor fitness equipment in accordance with the requirements of BS EN 16630, key requirements of the sign include, but are not limited to, intended users, medical safety and emergency contact details

Action: Provide appropriate signage



i 4 - Very Low Risk (Finding 1)

Item: Outdoor Fitness Equipment - Rower
Manufacturer: Sunshine Gym

Risk Level: V - Very Low Risk
Surface: Grass Matrix Tiles



Finding: There is no clear instruction label provided; an instruction label should be provided with each item of equipment in accordance with the requirements of BS EN 16630

Action: Provide appropriate instruction label/s

i 8 - Low Risk (Finding 2)

Item: Outdoor Fitness Equipment - Rower
Manufacturer: Sunshine Gym

Risk Level: L - Low Risk
Surface: Grass Matrix Tiles



Finding: BS EN 16630 - 4.3.1 states that fitness equipment shall be designed so when at rest, the equipment shall automatically adjust so that the equipment is ready for the next user

Action: Service the item



i 4 - Very Low Risk (Finding 1)

Item: Outdoor Fitness Equipment - Cross Trainer **Risk Level:** V - Very Low Risk
Manufacturer: Sunshine Gym **Surface:** Grass Matrix Tiles



Finding: There is no clear instruction label provided; an instruction label should be provided with each item of equipment in accordance with the requirements of BS EN 16630

Action: Provide appropriate instruction label/s

i 8 - Low Risk (Finding 2)

Item: Outdoor Fitness Equipment - Cross Trainer **Risk Level:** L - Low Risk
Manufacturer: Sunshine Gym **Surface:** Grass Matrix Tiles



Finding: The distance between the underside of the item and the ground is less than the 110mm required by BS EN 16630

Action: Monitor - No remedial work recommended



i 9 - Low Risk (Finding 1)

Item: Multi Use Games Area - Basketball Post
Manufacturer: Not Identified

Risk Level: L - Low Risk
Surface: Bitmac



Finding: There is some damage to the chain net

Action: Replace or repair as required

i 6 - Low Risk (Finding 2)

Item: Multi Use Games Area - Basketball Post
Manufacturer: Not Identified

Risk Level: L - Low Risk
Surface: Bitmac



Finding: The backboard is damaged

Action: Monitor for any further deterioration and repair as required



i 6 - Low Risk (Finding 3)

Item: Multi Use Games Area - Basketball Post
Manufacturer: Not Identified

Risk Level: L - Low Risk
Surface: Bitmac



Finding: A number of fixing(s) have worked loose

Action: Secure all loose fixings

i 6 - Low Risk (Finding 4)

Item: Multi Use Games Area - Basketball Post
Manufacturer: Not Identified

Risk Level: L - Low Risk
Surface: Bitmac



Finding: The item is slightly loose in its foundations

Action: Monitor for any further deterioration and repair as required